

duplex apartment with terraces at Schafberg

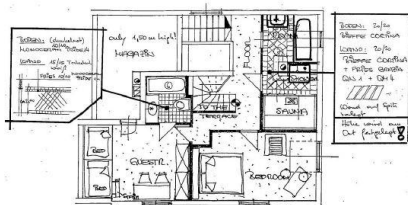
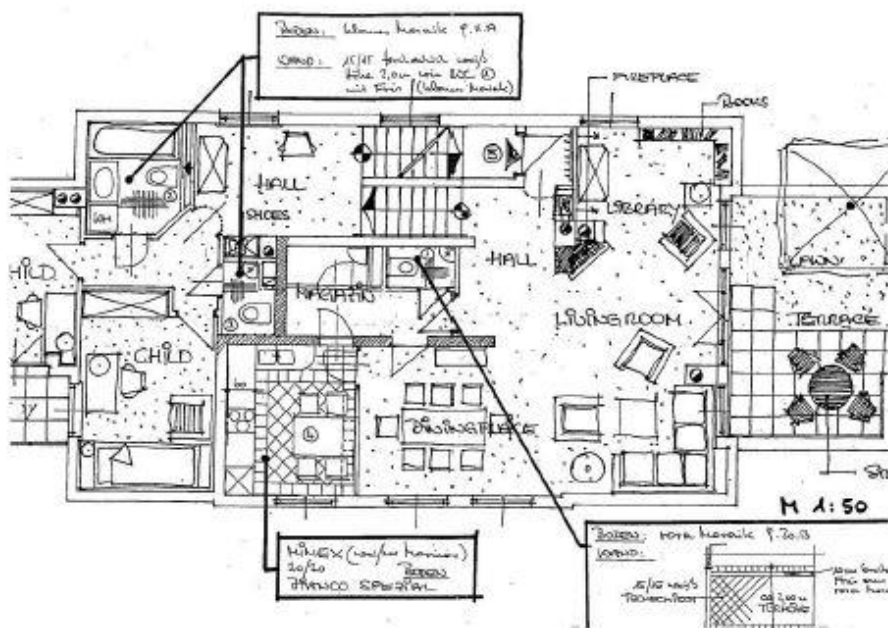
📍 1180 Wien, Proximity: Buchleitengasse, Blaselgasse

€ 2.840,-/month





Plans



About Property

This nice apartment is situated in green and calm neighbourhood of 18th district close to "Pötzleinsdorfer Schlosspark". It is situated on the third floor of a modern building (no elevator!!). The property has easy access by car to shops, restaurants, banks,.. as well as to various recreational facilities ("Vienna woods", vineyards). It has following rooms:

level 1: entree, living dining room with 15m² terrace, kitchen, bathroom, toilet.
level 2: hallway, 2 bedrooms, bathroom, toilet.
level 3: hallway, 2x bedroom, 2x bathroom, toilet,
level 4: roof terrace.

equipment: wooden and tiled floors, 2 terraces, in house garage can be rent separaely.

rent: general maintenance costs and VAT included

deposit: 5 gross rents

commission: 2 rents + 20% VAT

General

Property number	6172
Property type	Wohnung

Costs

operating cost	€ 632.98
total rent	€ 2.840,-

Keyfacts

living area	180m ²
rooms	5
bedroom	4
bath	3
WC	4
Property age	Neubau
condition	sehr gut
Available from	sofort
Contract type	befristet

Furnishing

type of heating	Etagenheizung
Flooring	Parkettboden
parking	Garage
kitchen	ja

Terrasse	1
Satellitenfernsehen	ja

Energy Performance Certificate

HWB (kwh/m ² /Jahr)	107.77
HWB Energieklasse	D

Lage

Verkehrsanbindung	40, 41
Nähe	Buchleitengasse, Blaselgasse

