

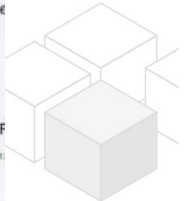
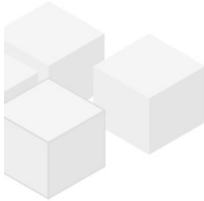
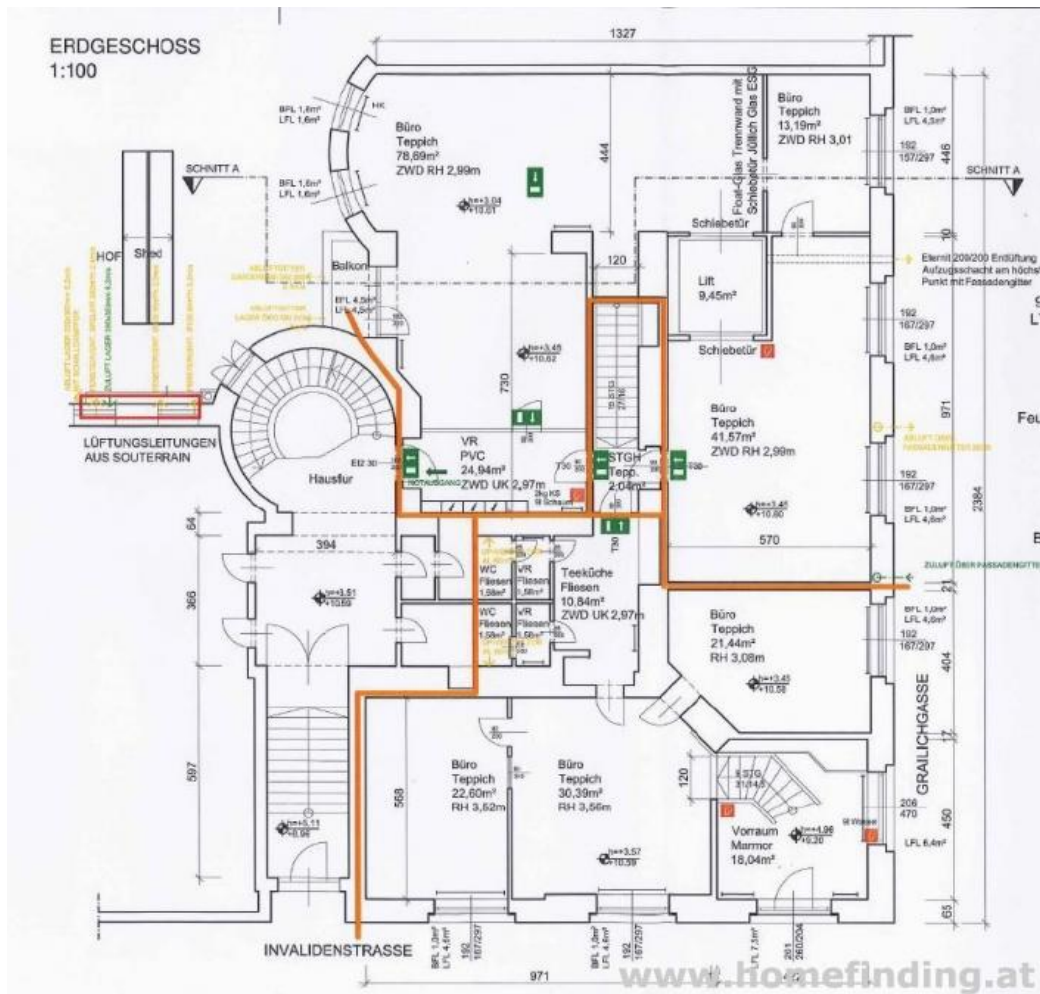
storage + office space in an oldstyle building - limited contract

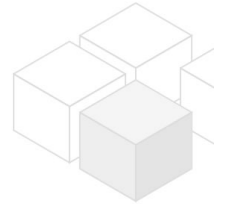
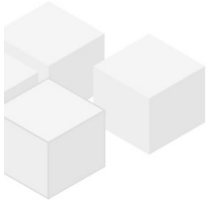
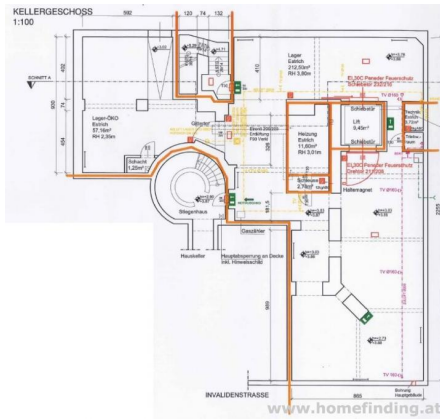
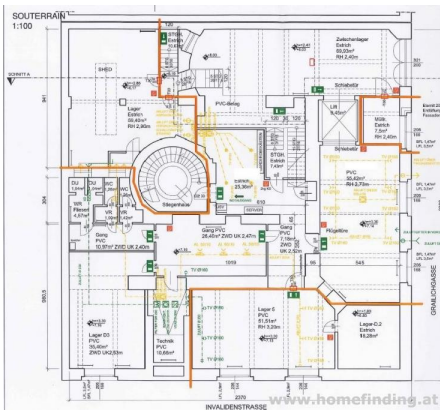


📍 1030 Wien, Proximity: Wien Mitte

€ 13.528,80/month

Plans





About Property

Nice Big storage space close to Wien Mitte

LOCATION

Due to its central location, the property guarantees a quick connection to the public transport network and the best infrastructure. Facilities for daily needs such as shops, post office, banks, etc. are within walking distance.

PUBLIC TRANSPORT

U3, U4, CAT, S1, S2, S3, S4, S7

PROPERTY

The property has following rooms:

ground floor: 270m²

soutterain: 420m²

cellar: 290m²

EQUIPMENT:

.please visit

CONTRACT

.Contract duration: limited

.no termination possibility for the tenant for an agreed period of time (several years)

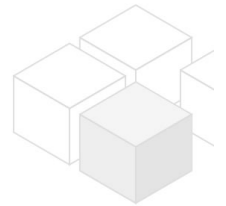
COST

Rent: general maintenance costs and VAT included

Deposit: 4 gross rents

commission: 3 rents + 20% VAT

stamp fee/ contract tax: due to law



General

Property number 11810

Property type Lager

Costs

net rent	€ 10.000,-
gross rent	€ 12000
operating cost	€ 1528.8
total rent	€ 13.528,80

Keyfacts

Nutzfläche 980m²

WC 2

Property age	Altbau
condition	sehr gut
Available from	sofort
Contract type	befristet

Furnishing

type of heating	Fussboden
Flooring	Parkettboden
parking	--
kitchen	nein

Energy Performance Certificate

HWB Energieklasse	D
-------------------	---

Lage

Verkehrsanbindung	U3, U4, CAT, S1, S2, S3, S4, S7
Nähe	Wien Mitte

