

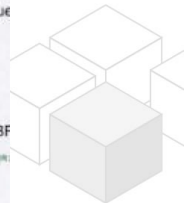
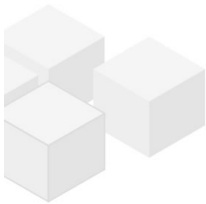
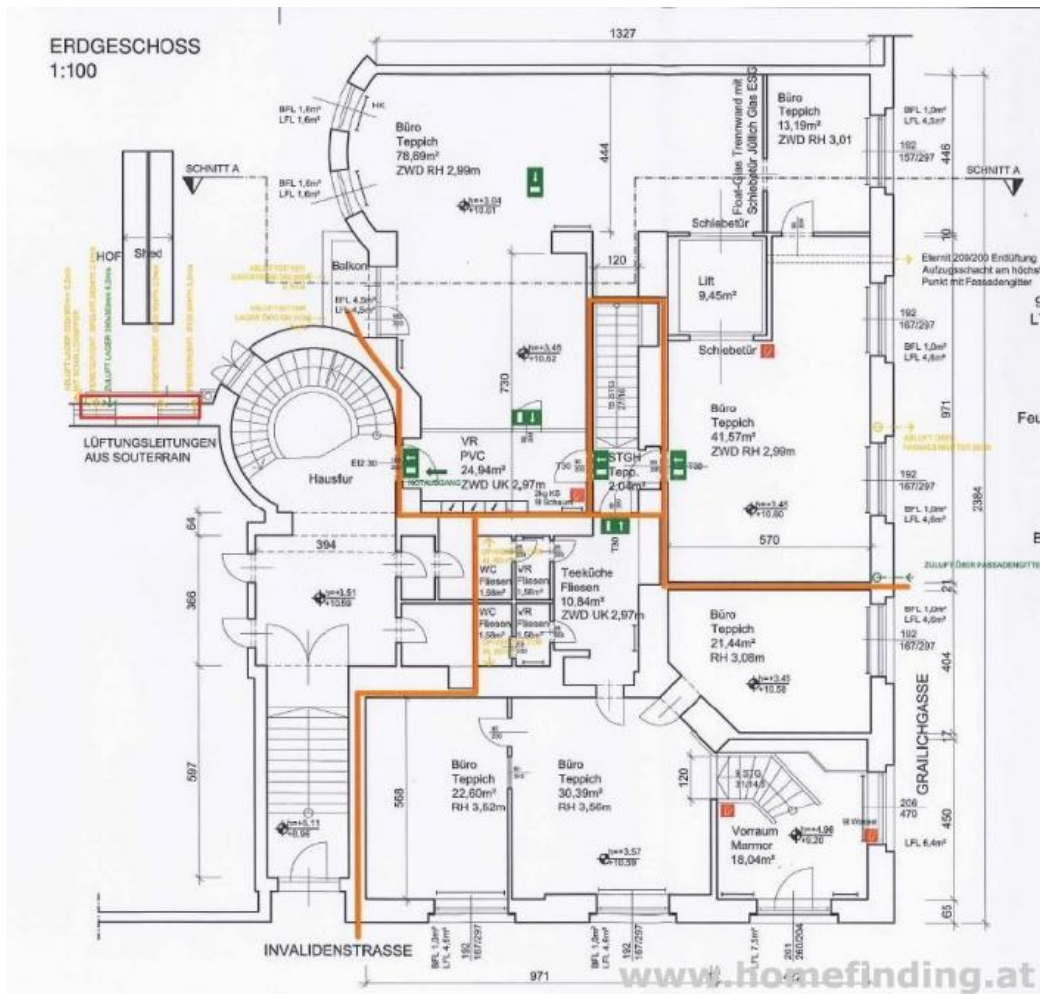
# storage + office space in an oldstyle building - limited contract

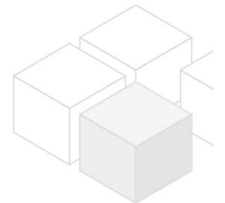
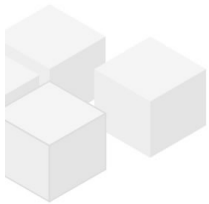
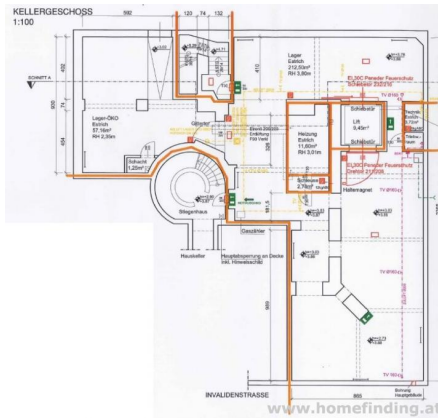
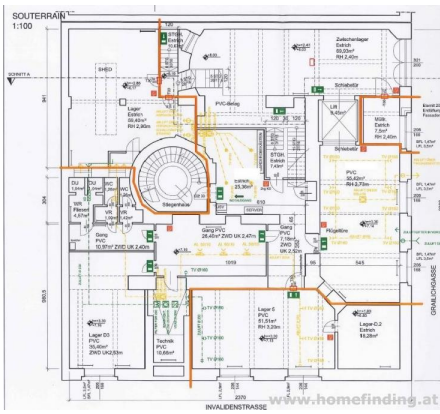


📍 1030 Wien, Proximity: Wien Mitte

€ 13.528,80/month

## Plans





## About Property

---

Nice Big storage space close to Wien Mitte

### LOCATION

Due to its central location, the property guarantees a quick connection to the public transport network and the best infrastructure. Facilities for daily needs such as shops, post office, banks, etc. are within walking distance.

### PUBLIC TRANSPORT

U3, U4, CAT, S1, S2, S3, S4, S7

### PROPERTY

The property has following rooms:

ground floor: 270m<sup>2</sup>

soutterain: 420m<sup>2</sup>

cellar: 290m<sup>2</sup>

### EQUIPMENT:

.please visit

### CONTRACT

.Contract duration: limited

.no termination possibility for the tenant for an agreed period of time (several years)

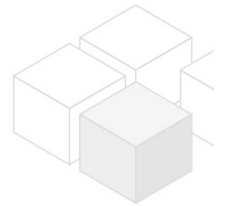
### COST

Rent: general maintenance costs and VAT included

Deposit: 4 gross rents

commission: 3 rents + 20% VAT

stamp fee/ contract tax: due to law



## General

---

Property number 11810

Property type Lager

## Costs

---

net rent	€ 10.000,-
gross rent	€ 12000
operating cost	€ 1528.8
total rent	€ 13.528,80

## Keyfacts

---

Nutzfläche 980m<sup>2</sup>

WC 2

Property age	Altbau
condition	sehr gut
Available from	sofort
Contract type	befristet

## Furnishing

type of heating	Fussboden
Flooring	Parkettboden
parking	--
kitchen	nein

## Energy Performance Certificate

HWB Energieklasse	D
-------------------	---

## Lage

Verkehrsanbindung	U3, U4, CAT, S1, S2, S3, S4, S7
Nähe	Wien Mitte

