

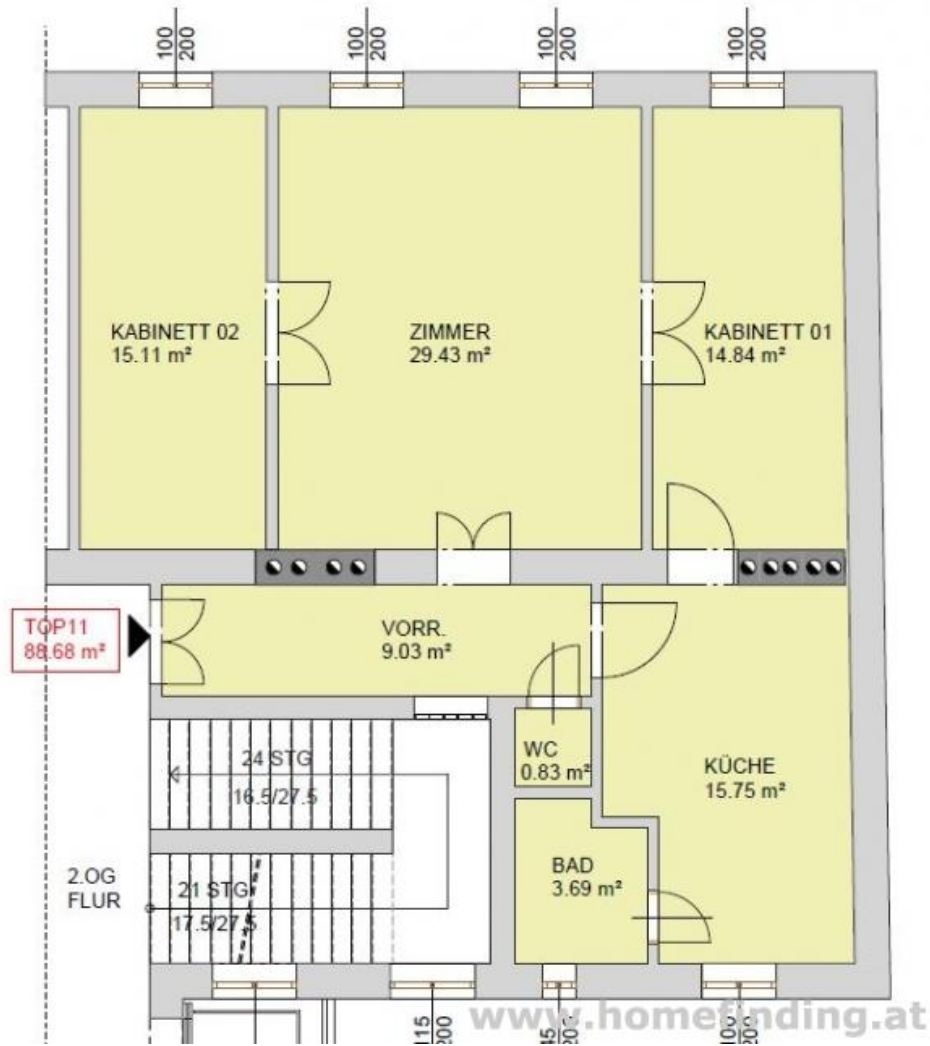
# old style apartment near hospital

📍 4020 Linz, Proximity: Schillerpark; Volksgarten

€ 1.030,77/month



## Plans



## About Property

---

bright oldstyle apartment in a calm street near Schillerpark, easy access to international school

### LOCATION

Shops, restaurants, supermarkets, pharmacies are within walking distance. The Volksgarten and Schillerpark can be reached by short walk. Public lines are nearby. Several tram- and buslines connect quickly with other parts of the city.

### PUBLIC TRANSPORT

1, 2, 3, 4, 45, 46, 70, 71, 73

### PROPERTY

The apartment is located on the first floor and offers following rooms:

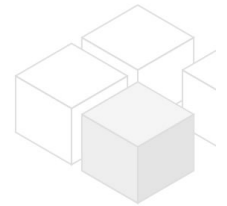
- .entree
- .living room
- .separate kitchen
- .2 bedrooms
- .bathroom (shower, window)
- .separate toilet

### EQUIPMENT

- .wooden and tiled floors
- .elevator

### COSTS

rent: general maintenance costs and VAT included  
deposit: 3 gross rents



## General

---

Propertynumber	11794
Property type	Wohnung

## Costs

---

net rent	€ 661,38
gross rent	€ 727.52
operating cost	€ 219.25
outher operating costs	€ 84
total rent	€ 1.030,77

## Keyfacts

---

living area	88.68m <sup>2</sup>
rooms	3
bedroom	2

---

bath	1
WC	1
Property age	Altbau
condition	sehr gut
Available from	sofort
Contract type	befristet

## Furnishing

---

type of heating	Etagenheizung
Flooring	Parkettboden
parking	--
kitchen	ja
elevator	ja

## Energy Performance Certificate

---

HWB Energieklasse	D
-------------------	---

## Lage

---

Verkehrsanbindung Nähe	1, 2, 3, 4, 45, 46, 70, 71, 73 Schillerpark; Volksgarten
---------------------------	---

