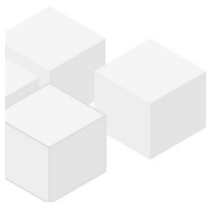


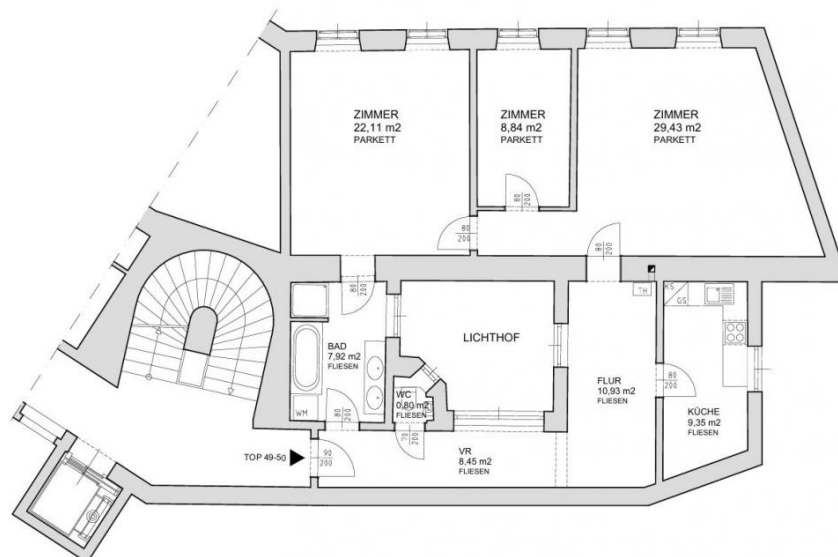
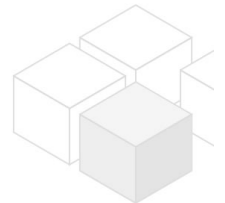
Nice 3 rooms close to Nußdorferstraße

📍 1090 Wien, Proximity: Liechtensteinpark, Nußdorfer Straße

€ 1.873,55/month



Plans



www.homefinding.at

About Property

This beautiful, partially renovated apartment is located on the 4th floor with an elevator in a central location.

LOCATION:

Local supply such as shops, restaurants, supermarkets, etc. is within walking distance. Public lines U6, 37, 38, 33, and 40A connect to the rest of the city.

PROPERTY:

The apartment has following rooms:

- .Entree
- .Spacious living room
- .Separate kitchen with window
- .2 bedrooms
- .Bathroom with tub and shower
- .Separate toilet

EQUIPMENT

- .Wooden and tiled floors
- .Cellar storage compartment

COSTS:

rent: general maintenance costs, elevator and VAT included

deposit: 4 gross rents

General

Property number	11721
Property type	Wohnung

Costs

net rent	€ 1.418,54
gross rent	€ 1560.39
operating cost	€ 313.16
total rent	€ 1.873,55

Keyfacts

living area	97.83m ²
rooms	3
bedroom	2
bath	1
WC	1
Property age	Altbau

condition	sehr gut
Available from	sofort
Contract type	unbefristet

Furnishing

type of heating	Etagenheizung
Flooring	Parkettboden
parking	--
kitchen	ja
elevator	ja

Energy Performance Certificate

HWB Energieklasse	D
-------------------	---

Lage

Verkehrsanbindung	33, 37, 38, 40A
Nähe	Liechtensteinpark, Nußdorfer Straße

